

# MILTON ACADEMY VISUAL ARTS EXHIBITIONS 2017-2018

## Emilie Stark-Menneg '02 *Waterworks*



**Nesto Gallery**  
in the Art & Media Center – lower level

**September 21 -  
October 27, 2017**

**Opening Reception**  
Thursday, September 21  
5:30-7 pm

Emilie Stark-Menneg, *Flying Checkpoint*, 2016  
Oil and acrylic on canvas, 70"x70"

## John Bisbee '84 *Stick | Squall*



**Outdoor Installation**  
in front of the Art & Media Center

**September 2017 -  
June 2018**

**Opening Reception** in the Nesto Gallery  
Thursday, September 21  
5:30-7 pm

John Bisbee, *Stick*, 2002  
Steel nails, 48" diameter x 69" tall

## Frances Scanlon *Ubuntu | Jazz South Africa Tour Images*



**Arts Commons**  
in the Kellner Performing Arts Center

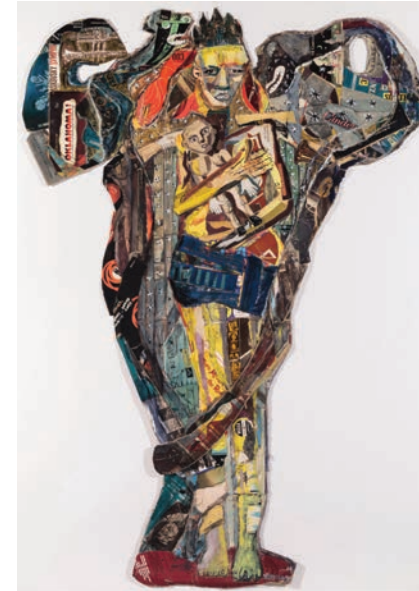
**September 1-29, 2017**

**Opening Reception**  
Friday, September 15  
5:30-7 pm

**Milton Jazz Performance**  
7-8 pm

Frances Scanlon, *Inkukhu ka Mama | Mama's Chicken*  
2017, Digital print, 36"x54"

## Howard Lerner *Fractured Tales*



**Nesto Gallery**  
in the Art & Media Center – lower level

**November 2 -  
December 14, 2017**

**Opening Reception**  
Thursday, November 2  
5:30-7 pm

**Artist Talk**  
Wednesday, November 1  
9-9:45 am | Wigg Hall

Howard Lerner, *Goddess with Child and Serpents*  
2012, Oil with "album cover" collage materials  
81"x67"

## Senior Portfolio Show *Upper School Student Art Exhibition*



**Arts Commons**  
in the Kellner Performing Arts Center

**December 7, 2017 -  
January 12, 2018**

**Opening Reception**  
Thursday, December 7  
Recess 10-10:30 am

Caroline Magann '18, *Sunrise Lake*, 2016  
digital inkjet print, 9"x14"

## Jim Stroud - Curator *Print Selections from Center Street Studio*



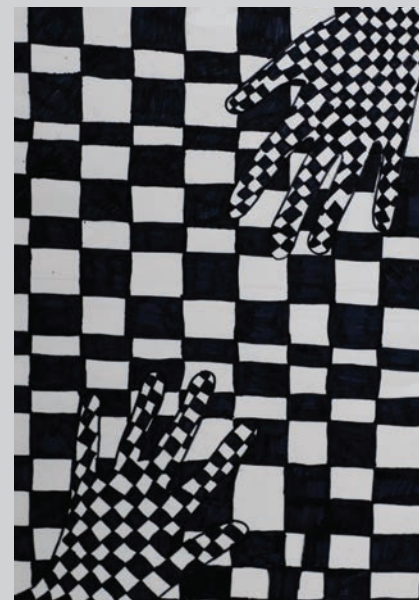
**Nesto Gallery**  
in the Art & Media Center – lower level

**January 11 -  
February 16, 2018**

**Opening Reception**  
Thursday, January 11  
5:30-7 pm

Markus Linnenbrink  
*I HEARD YOU LOOKING (SCHRÄG)*, 2015  
Monotype, 52"x34.5"

## Winter Artstravaganza *Middle School Student Art Exhibition*



**Arts Commons**  
in the Kellner Performing Arts Center

**January 25 -  
February 23, 2018**

**Opening Reception**  
Thursday, January 25  
Recess 10-10:30 am

Meredith Monnich '23, *Optic Art Hand Illusion*, 2017  
Ink on paper, 12"x18"

## Deb Todd Wheeler | Robert Todd *Artificial Atmospheres*



**Nesto Gallery**  
in the Art & Media Center – lower level

**February 22 -  
April 20, 2018**

**Opening Reception**  
Thursday, February 22  
5:30-7 pm

**Artist Talk**  
Wednesday, February 28  
9-9:45 am | Wigg Hall

Deb Todd Wheeler & Robert Todd  
*Imposters*, 2016, Video

## The Big Show *Upper School Student Art Exhibition*



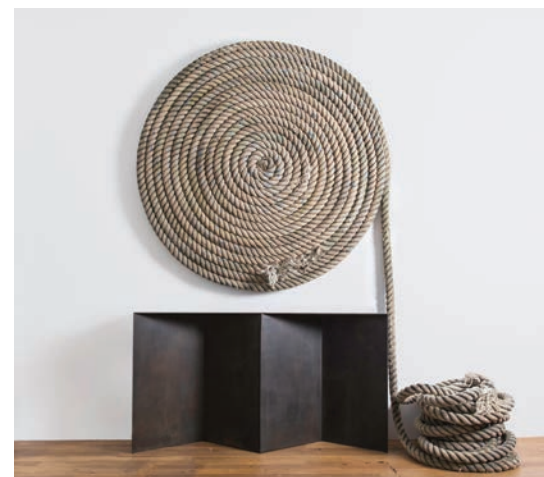
**Arts Commons**  
in the Kellner Performing Arts Center

**March 1 -  
May 4, 2018**

**Opening Reception**  
Thursday, March 1  
Recess 10-10:30 am

Lucy Landau '18, *Self-Portrait*, 2017  
Oil on canvas, 43"x36.5"

## Bill Hilgendorf '98 *Uhuru Design Studio*



**Nesto Gallery**  
in the Art & Media Center – lower level

**April 26 -  
June 16, 2018**

**Opening Reception**  
Thursday, April 26  
5:30-7 pm

**Reunion Weekend  
Closing Reception**  
Saturday, June 16  
1-2:30 pm

Bill Hilgendorf, *Tack Console with untitled Rope Sculpture*, 2016, Mixed media,  
Tack Console 72"x36"x12", Rope Sculpture 72" diameter x 3"

## Spring Artstravaganza *Middle School Student Art Exhibition*



**Arts Commons**  
in the Kellner Performing Arts Center

**May 10 -  
May 31, 2018**

**Opening Reception**  
Thursday, May 10  
Recess 10-10:30 am

Grade Six '24, *Masking Tape Shoe Sculptures*  
2016

**Nesto Gallery Artist Exhibitions:**  
in the Art & Media Center - lower level  
8:30 am - 4 pm weekdays

**Arts Commons  
Artist, Community & Student Exhibitions:**  
in the Kellner Performing Arts Center  
8:30 am - 4 pm weekdays

**Outdoor Installation:**  
in front of the Art & Media Center

170 Centre Street, Milton, MA 02186

[www.milton.edu/arts/nesto-gallery](http://www.milton.edu/arts/nesto-gallery)

## Senior Project Art Show *Upper School Student Art Exhibition*



**Arts Commons**  
in the Kellner Performing Arts Center

**June 6-8, 2018**

**Opening Reception**  
Wednesday, June 6  
Recess 10-10:30 am

Sophie Lee '18, *Two Vessels*, 2016  
Glazed ceramic, 16"x16"x13" and 14"x13"x9"